

MECKLENBURGER LANDTECHNIK

Fricke Landmaschinen GmbH Bockel - Gyhum
Wichernstraße 2
27404 Bockel - Gyhum
Tel: 0049 (0) 4281712710
Fax: 0049 (0) 4281712717

Kotte PT 18.500 [383002302000078]

Year of manufacture: 2010

Date: 16.04.2026

Design:

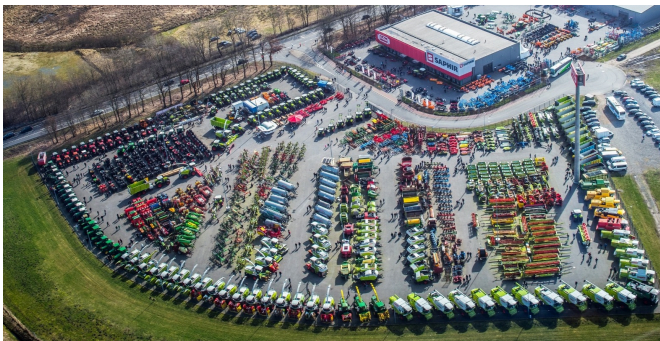
Manure technology + manure technology

Category:

Pumpass

€ 49,000.⁰⁰

plus VAT 19% (€ 58,310.⁰⁰ Gross)



Equipment

Mounting device for application technique	Schleppschlauch
Attachment	unten
Working width	24
Design	pump
Filling system	saugarm
Container material	Steel
Tyres	750/60 R30,5
State	Used
Air brake	✓
Landing gear	Tandem axle
Suspension	mechanical
Foreign body separator	✓

Description

- Tires 750/60 R30.5
- K80 bottom hanger
- Cardan shaft
- Air brake
- Load sensing
- Suction arm front right
- Vogelsang rotary lobe pump VX186-260Q Year of manufacture 2023
- Forced steering
- Roto Cut
- Rear linkage
- Vogelsang drag hose linkage 24m

Filling quantity	17.700,00
hydr. foldable	✓
Pump type	Rotary lobe pump
Technical condition	Good
Distributors	schleppschauch
Forced steering	✓