

**Saphir Silageschild Kombi 5001 \*\* ANGEBOT DES MONATS \*\* [574.00500.2000003]**

Year of manufacture: 2022

Date: 01.02.2023

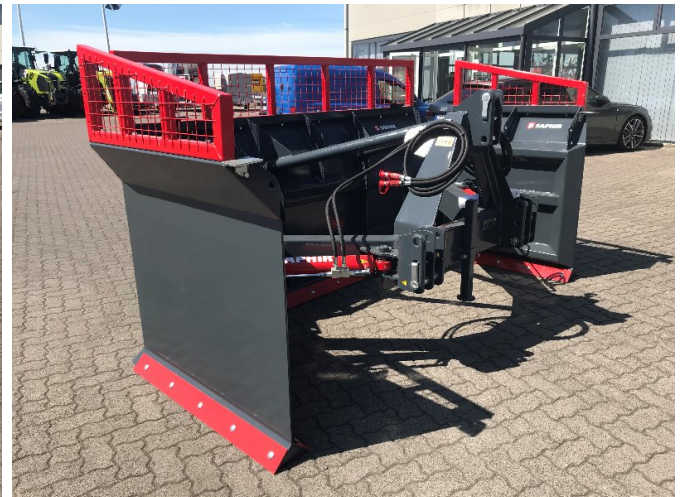
Design:

Grassland technology + Forage harvesting technology

Category:

Other grassland equipment + forage harvesting equipment

Price on request



## Equipment

**State** Used  
**Technical condition** New

## Description

- Corn and grass slurry blade
- Suitable for train and push travel
- Highly wear-resistant skirting boards
- Side parts individually hydraulically swivelling
- Pivoting range 120°
- with grid attachment for 1560 mm shield height
- Working width 5 mtr
- Transport width 3 mtr
- 1030 kg Dead weight
- Three-point linkage cat. II/ III
- Powder coating